

# Recombinant Human ITGA6 & ITGB4 protein, Flag/His-tagged

**Cat. No.** ITGA6 & ITGB4-610H    **Lot. No.** (See product label)

## SPECIFICATION

<b>Product Overview</b>	Recombinant Human ITGA6 (Met1-Ser1011) & ITGB4 (Met1-Ser710) protein was fused to Flag/His-tag at the C-terminus and expressed in HEK293 Cells.
<b>Species</b>	Human
<b>Source</b>	HEK293
<b>ProteinLength</b>	ITGA6 (Met1-Ser1011) & ITGB4 (Met1-Ser710)
<b>Description</b>	The gene encodes a member of the integrin alpha chain family of proteins. Integrins are heterodimeric integral membrane proteins composed of an alpha chain and a beta chain that function in cell surface adhesion and signaling. The encoded preproprotein is proteolytically processed to generate light and heavy chains that comprise the alpha 6 subunit. This subunit may associate with a beta 1 or beta 4 subunit to form an integrin that interacts with extracellular matrix proteins including members of the laminin family. The alpha 6 beta 4 integrin may promote tumorigenesis, while the alpha 6 beta 1 integrin may negatively regulate erbB2/HER2 signaling. Alternative splicing results in multiple transcript variants.
<b>Predicted N Terminal</b>	Phe24 & Asn28
<b>Form</b>	Lyophilized from sterile PBS,pH 7.4. Normally 5% - 8% trehalose, mannitol and 0.01% Tween80 are added as protectants before lyophilization.

 Tel: 1-631-559-9269    1-516-512-3133

 Email: [info@creative-biomart.com](mailto:info@creative-biomart.com)     Fax: 1-631-938-8127

 45-1 Ramsey Road, Shirley, NY 11967, USA

<b>Molecular Mass</b>	The recombinant heterodimer of human ITGA6 & ITGB4 comprises 1754 (1030 + 724) amino acids and has a calculated molecular mass of 196 (115 + 81) kDa.
<b>Endotoxin</b>	< 1.0 EU per µg protein as determined by the LAL method.
<b>Purity</b>	> (38.3+44.4)% as determined by SDS-PAGE.
<b>Stability</b>	Samples are stable for up to twelve months from date of receipt at -20 to -80 centigrade.
<b>Storage</b>	Store it under sterile conditions at -20 to -80 centigrade. It is recommended that the protein be aliquoted for optimal storage. Avoid repeated freeze-thaw cycles.
<b>Shipping</b>	In general, recombinant proteins are provided as lyophilized powder which are shipped at ambient temperature. Bulk packages of recombinant proteins are provided as frozen liquid. They are shipped out with blue ice unless customers require otherwise.

## GENE INFORMATION

<b>Gene Name</b>	<a href="#">ITGA6</a>
<b>Official Symbol</b>	<a href="#">ITGA6</a>
<b>Synonyms</b>	CD49f; VLA-6; ITGA6B
<b>Gene ID</b>	<a href="#">3655</a>
<b>mRNA Refseq</b>	<a href="#">NM_001079818.3</a>
<b>Protein Refseq</b>	<a href="#">NP_001073286.1</a>

 Tel: 1-631-559-9269 1-516-512-3133

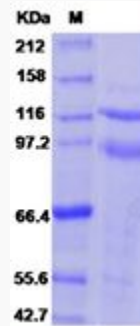
 Email: [info@creative-biomart.com](mailto:info@creative-biomart.com)  Fax: 1-631-938-8127

 45-1 Ramsey Road, Shirley, NY 11967, USA

MIM 147556

UniProt ID P23229

SDS-PAGE of ITGA6  
& ITGB4-610H



 Tel: 1-631-559-9269 1-516-512-3133

 Email: [info@creative-biomart.com](mailto:info@creative-biomart.com)  Fax: 1-631-938-8127

 45-1 Ramsey Road, Shirley, NY 11967, USA